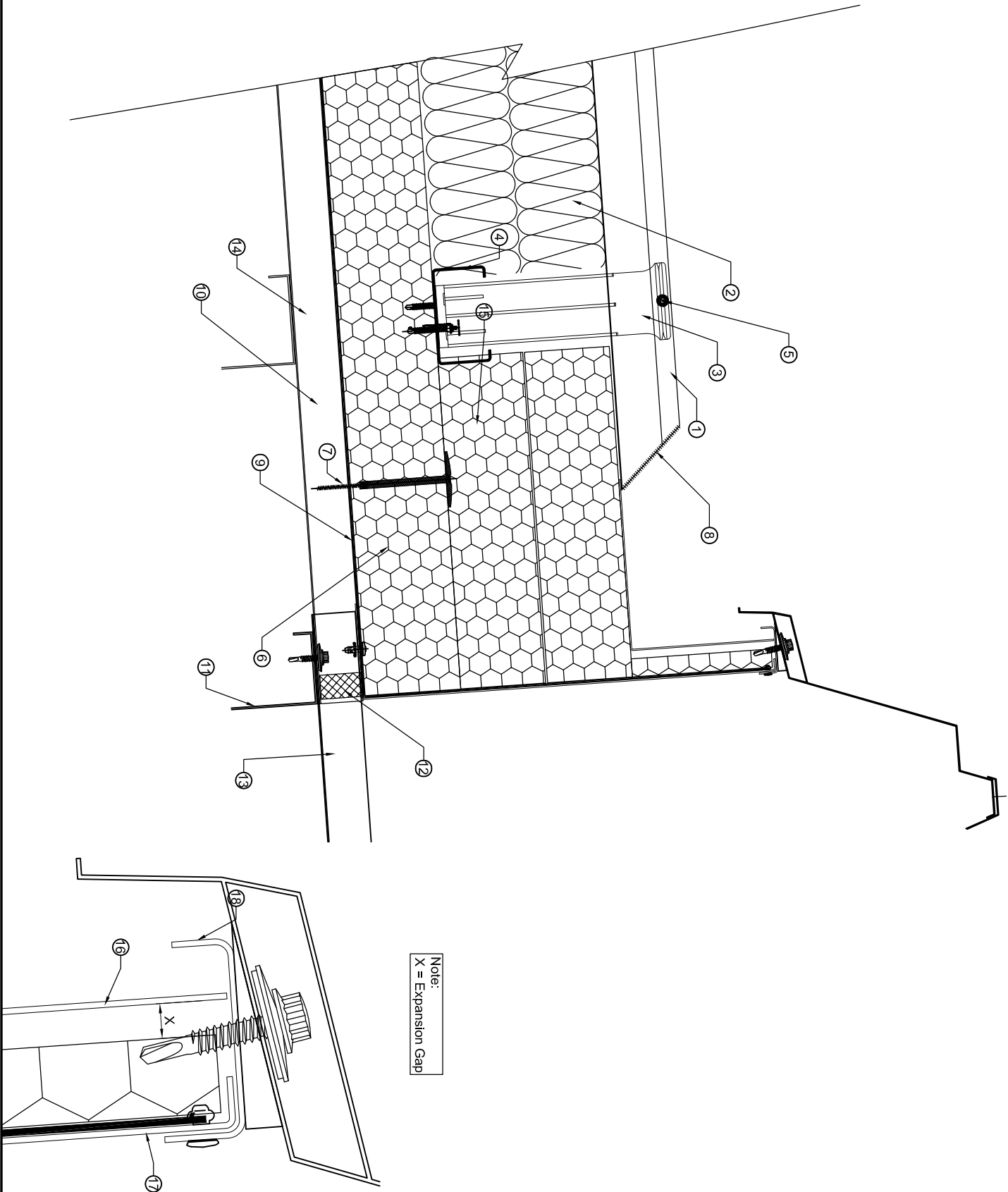


Notes

- ① Kalzip 65/400 aluminium standing seam top sheet.
- ② Kalzip Thermal insulation Plus xx, 2x100mm compressed to 180mm.
- ③ E180 clip.
- ④ 99.5x55x1.8mm galvanised steel sub purlin, Grade S280GD+2275
- ⑤ M6 Nut and bolt as fixed point
- ⑥ 100mm Kalzip Insulation 23 2400mmx1200mm boards
- ⑦ S.F.S R45x65/BS-4-8x70 (Four per board positioned 100mm minimum from corners. Fixed into crowns of liner
- ⑧ Kalzip seam cut back and fully welded
- ⑨ Kalzip clear vapour control layer.
- ⑩ Kalzip trapezoidal steel liner sheet to suit Kalzip top sheet (wide rib up).
- ⑪ Cold rolled galvanised steel purlin (by others)
- ⑫ Liner Filler.
- ⑬ Translucent Liner Sheet
- ⑭ S.F.S Intec SXC5-S19-5.5x163 fixed through crowns of liner and into purlin
- ⑮ Kalzip Insulation 23 to fully support welded area
- ⑯ Soaker flashing upstand
- ⑰ Soaker liner
- ⑱ Soaker capping fixed to soaker liner only

Note:
X = Expansion Gap



A Tria Steel Enterprise

Kalzip Ltd

Haydock Lane, Haydock, St. Helens
MERSEYSIDE, WA11 9TY

Tel: 01942 295 500

Fax: 01942 295 508

This drawing is copyright and is issued on the express condition that it is not to be copied or disclosed by or to any unauthorised person or firms without prior consent in writing from Kalzip.

Project: Kalzip Standard Details

Client: Kalzip Ltd

Title: Soaker Eaves

Scale:	Date:	Drawn:	Checked:
1:4 @ A3	16.12.08	OPW	
Dwg No.	Rev:		
KAL-0-DS-LOWU-7-001	B		