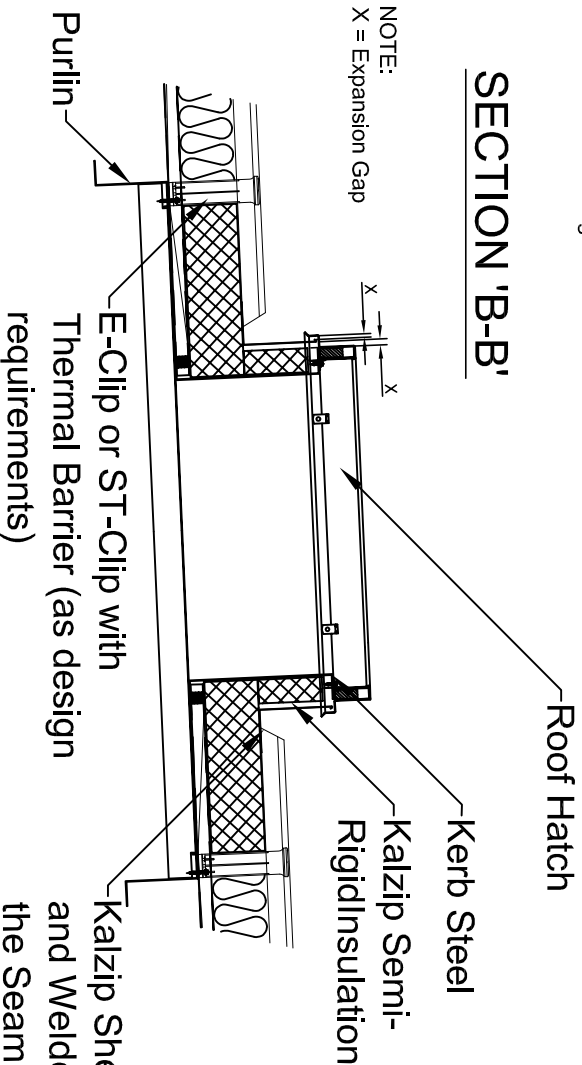


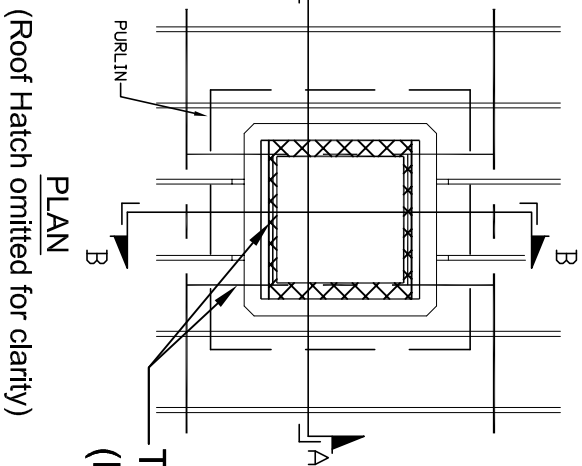
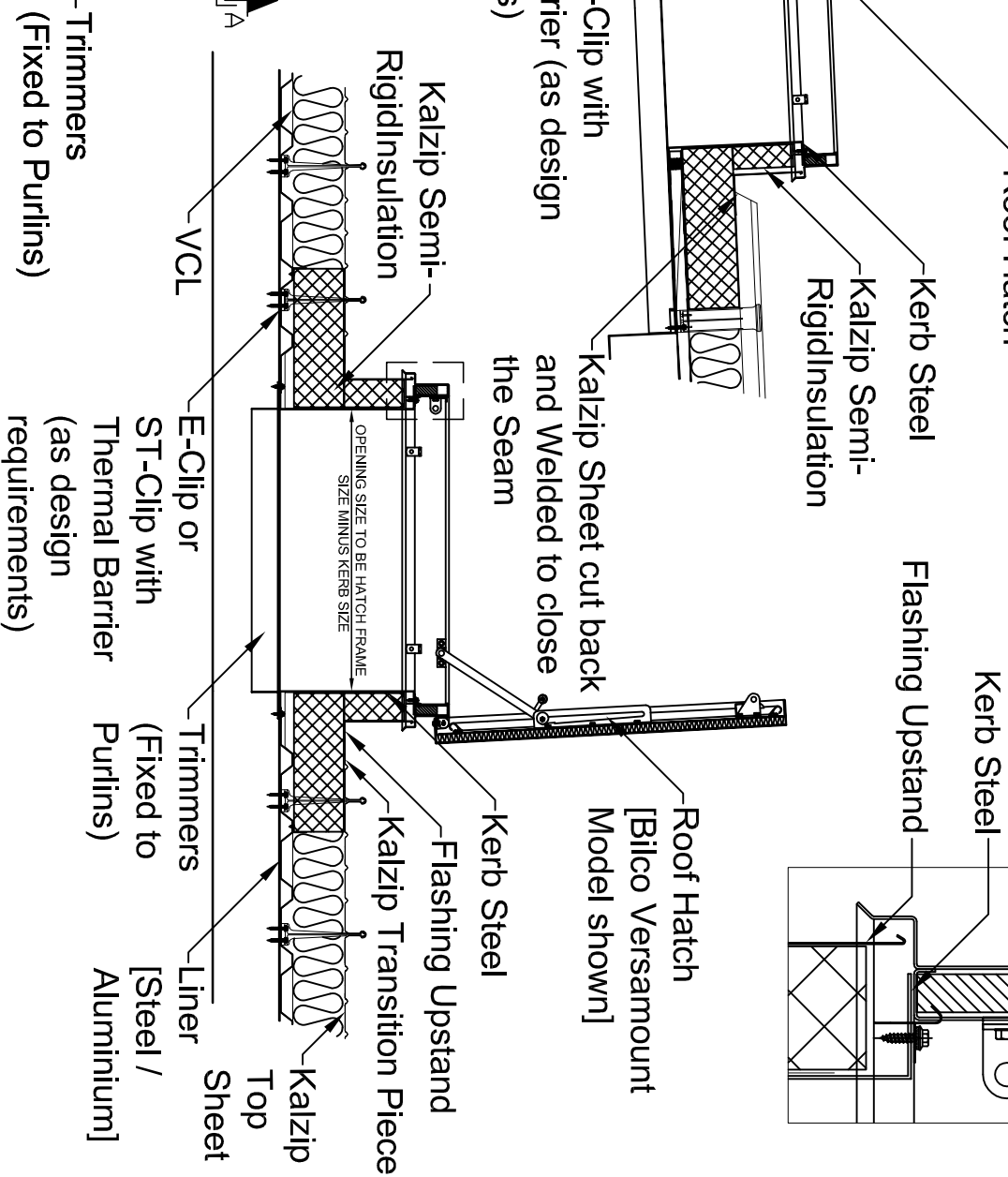
NOTE:
All combustible materials are to be removed from the vicinity of the joint to ensure that there will be no fire risk due to site welding.

SECTION 'B-B'

NOTE:
X = Expansion Gap



Roof Hatch fixed to Kerb Steel using Anchor Clip



SECTION 'A-A'

- Notes
1. All Dimensions in mm Unless Otherwise Stated
 2. Do Not Scale From This Drawing
 3. Isolate All Dissimilar Materials With Barrier Tape
 4. If in Doubt, ASK

| Rev | Drawn | CHKD | Date | Description |
|-----|-------|------|----------|--------------------------|
| B | JPK | - | 10-08-12 | Colour Scheme and Layout |



A Tria Steel Enterprise

Kalzip Ltd

Haydock Lane, Haydock, St. Helens
MERSEYSIDE, WA11 9TY

Tel: 01942 295 500
Fax: 01942 295 508

This drawing is copyright and is issued on the express condition that it is not to be copied or disclosed by or to any unauthorised person or firms without prior consent in writing from Kalzip.

Project: Kalzip

Client: Kalzip Ltd

Title: Double Skin Welded Soaker
with Roof Hatch

| Scale: | Date: | Drawn: | Checked: |
|---------|------------------|--------|----------|
| NTS | 29-06-06 | KRT | - |
| Dwg No. | KZ-0-RH-B-34-001 | | |
| | | Rev: | B |

FOR GUIDANCE ONLY