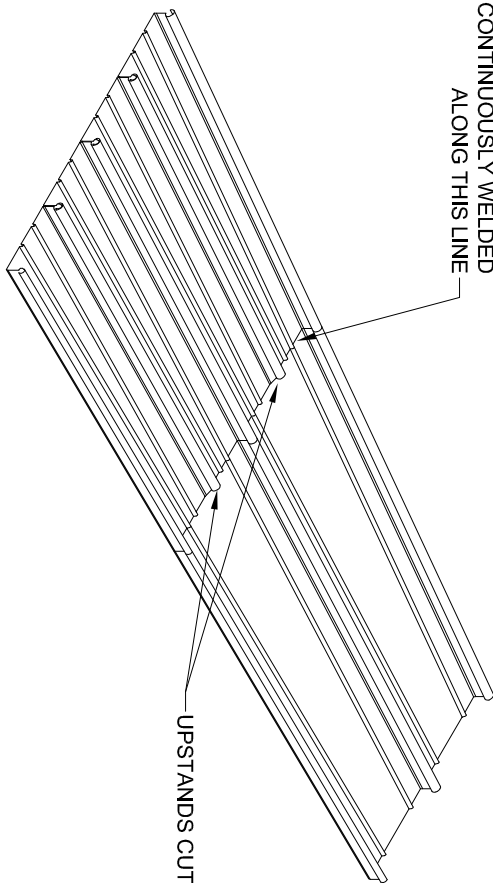
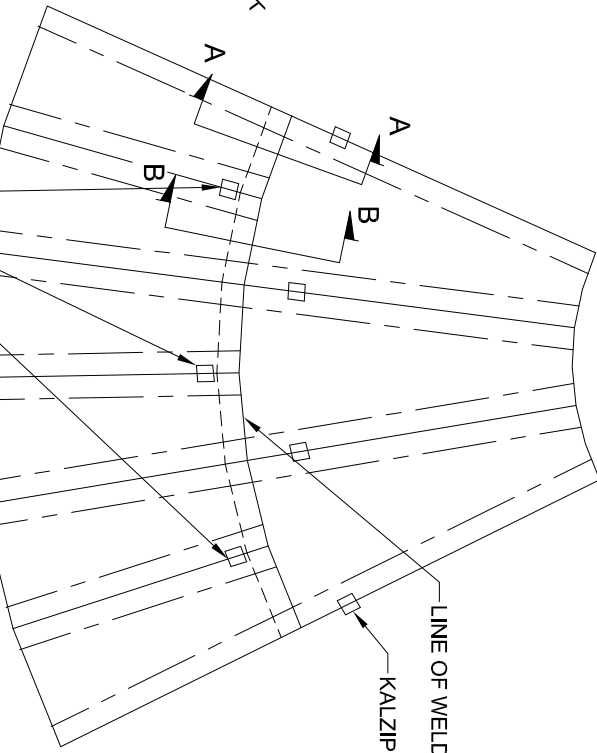


OVERLAPPED SHEETS
CONTINUOUSLY WELDED
ALONG THIS LINE



UPSTANDS CUT BACK



ISOMETRIC VIEW

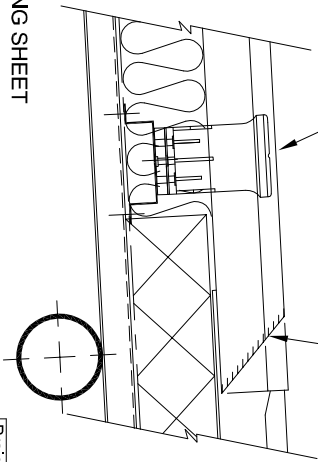
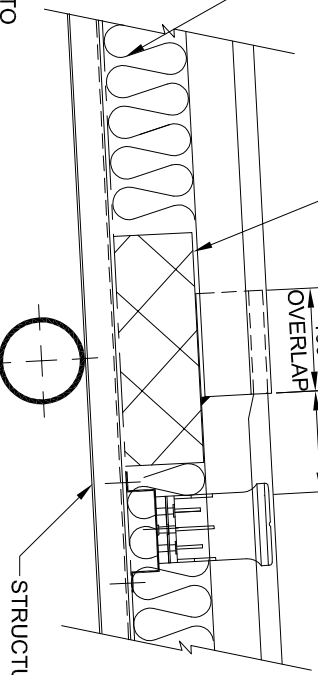
PLAN VIEW

NOTE:
ALL COMBUSTIBLE MATERIALS ARE TO BE
REMOVED FROM THE VICINITY OF THE
JOINT TO ENSURE THAT THERE WILL BE NO
FIRE RISK DUE TO SITE WELDING

HIGH DENSITY KALZIP INSULATION

UPSTANDS CUT BACK AND
WELDED TO CLOSE SEAM
(SEE NOTE)

KALZIP INSULATION



- NOTES:
1. FOR TECHNICAL INFORMATION REGARDING TAPERED SHEETS REFER TO TIS-4-01
 2. FOR TYPICAL WELDED LAP DETAIL REFER TO MISC-0-03

NOTE:
STRUCTURE SHOWN AS INDICATIVE, ACTUAL
SUPPORT/CONSTRUCTION WILL BE DEPENDANT UPON
INDIVIDUAL PROJECT REQUIREMENTS

1. All Dims in mm Unless Otherwise Stated
2. Do Not Scale From This Drawing
3. Isolate All Dissimilar Materials With Barrier Tape
4. If in Doubt, ASK



A Tata Steel Enterprise

Kalzip Ltd
Haydock Lane, Haydock, St. Helens
MERSEYSIDE, WA11 9TY
Tel: 01942 717072 Fax: 01942 715713
This drawing is copyright and is issued on the express condition
that it is not to be copied or disclosed by or to any unauthorised
person or firms without prior consent in writing from Kalzip.

Project:		Kalzip Standard Details	
Client:		Kalzip Ltd	
Title: Kalzip Transverse Joint Detail 2 sheets Tapered to 1			
Scale:	Date:	Drawn:	Checked:
NTS	20.07.05	KRT	
Dwg No.	KZ-0-MISC-K-8-005		Rev: C